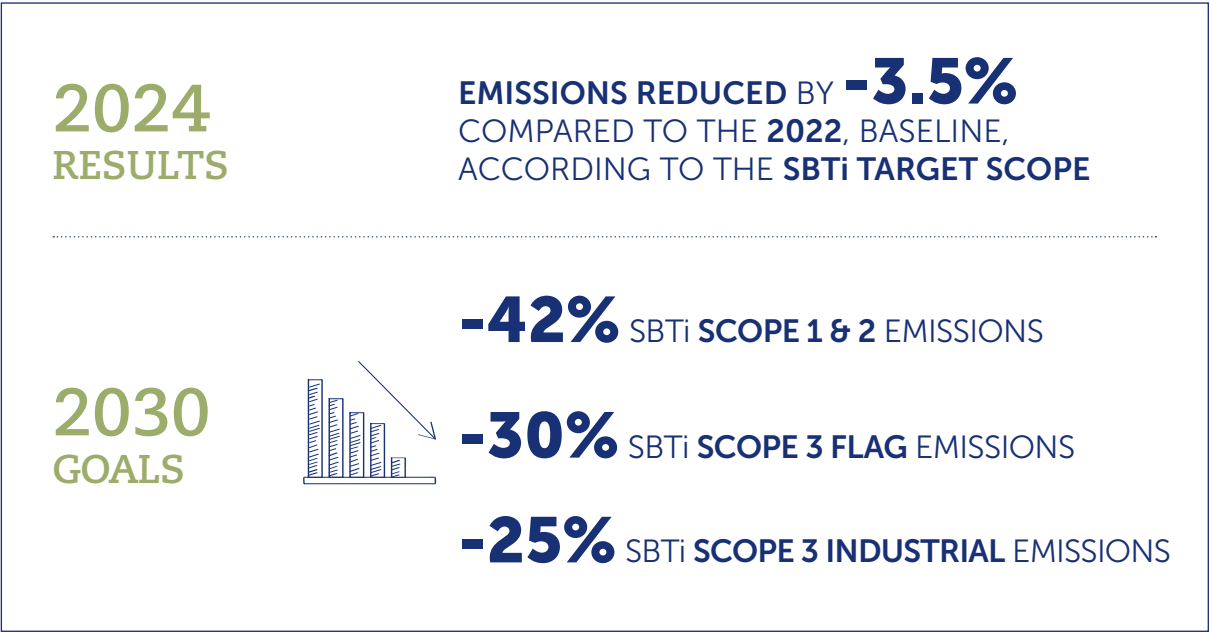
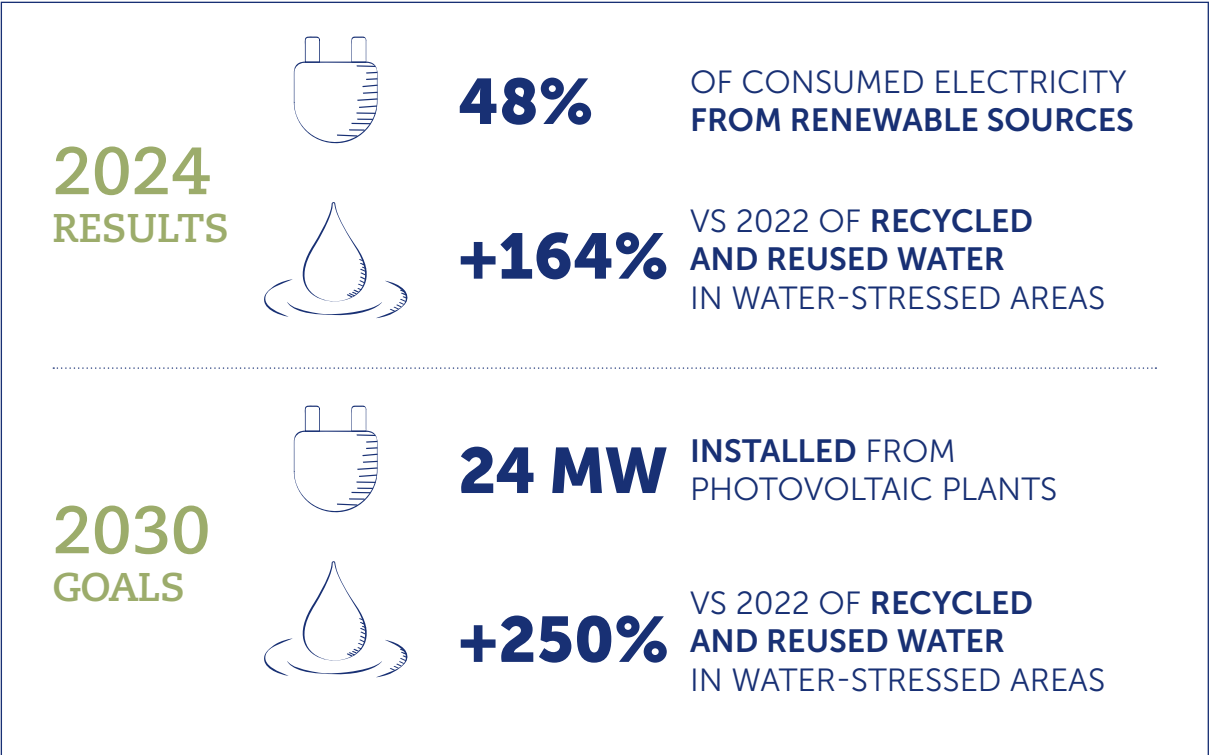
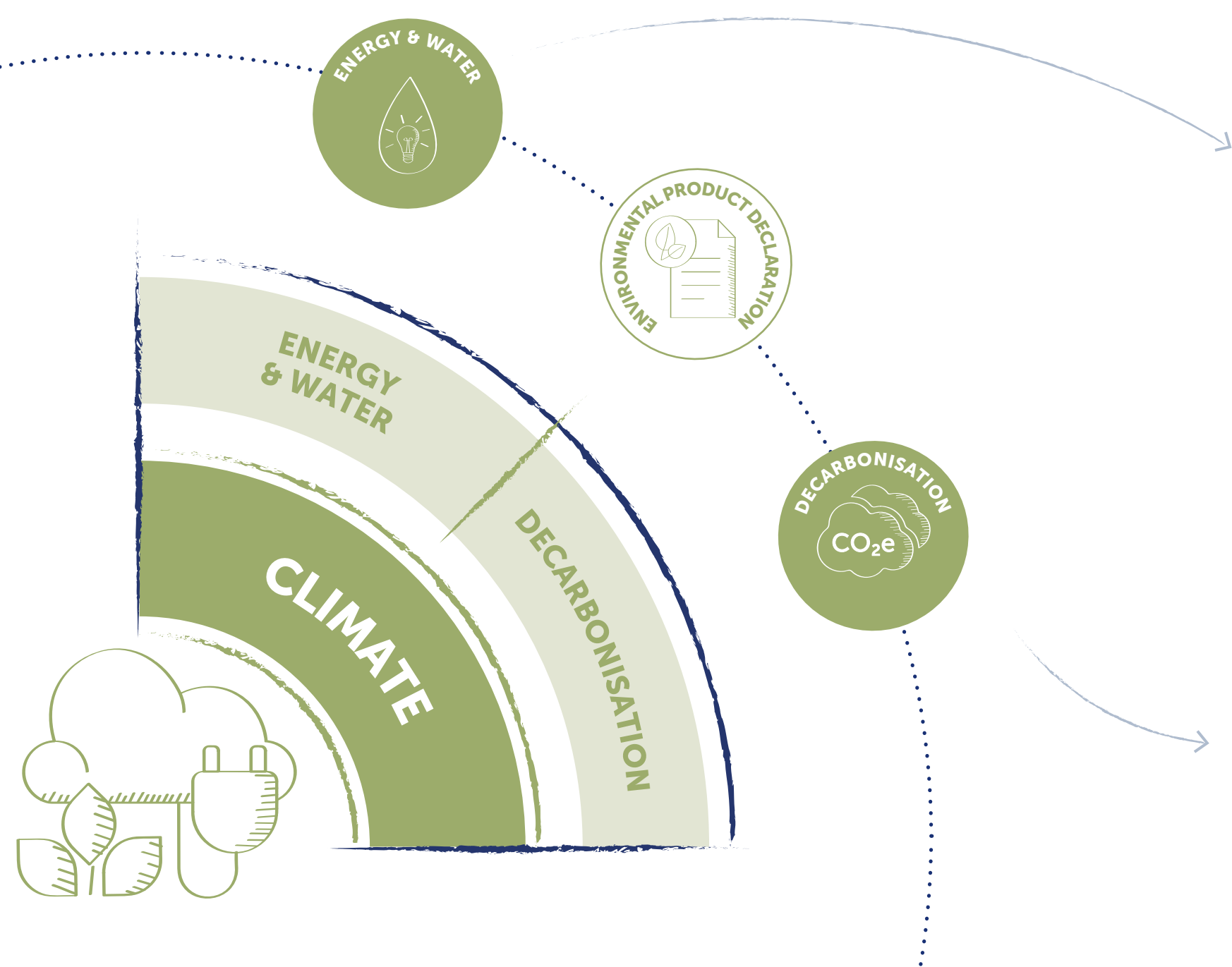


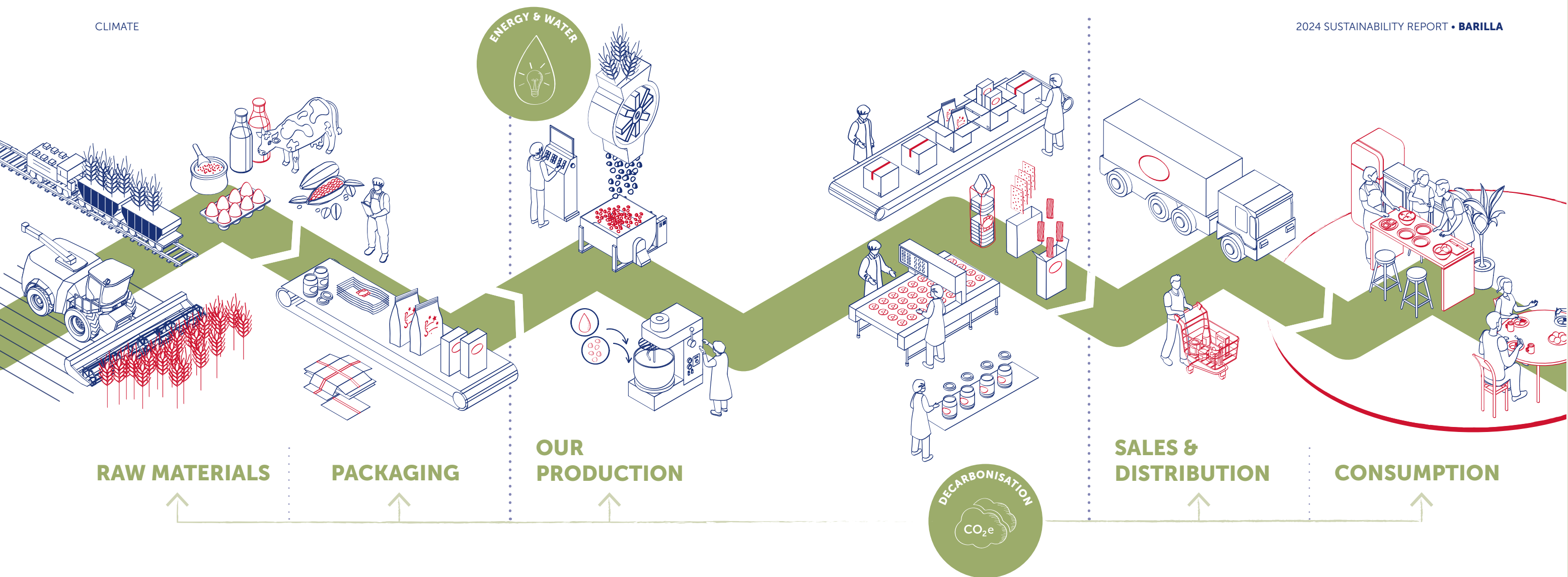
Barilla considers climate change one of the most urgent challenges globally and has defined a strategy based on scientific evidence, integrating monitoring tools, impact analysis and forecasting models. The approach is based on two complementary guidelines: adaptation and mitigation, with a continuous assessment of risks and opportunities throughout the value chain.

Adaptation aims to strengthen operational resilience in the face of extreme events, water stress and energy instability, through efficiency in the use of water, energy and circular waste management. Mitigation aims to reduce emissions along the entire value chain

(Scope 1, 2 and 3), through renewable sources, greater efficiency, reduction of the carbon footprint in supply chains and gradual abandonment of fossil fuels.

Through the integration of adaptation and mitigation, Barilla promotes a sustainable and resilient development model, actively involving suppliers, partners and stakeholders.





## ENERGY & WATER

In the current context, the efficient and sustainable management of energy, water and waste resources is a strategic priority for Barilla. **The company has developed an ambitious multi-year investment plan to reduce its environmental impact** by improving operational efficiency and focusing on the following three key areas: **Energy, through the adoption of advanced technological solutions in its plants** and the use of renewable energy, including self-generation; **Water, reducing consumption and increasing recovery and reuse**, especially in water-stressed areas where the company focuses its efforts on limiting environmental impact and ensuring continuity of production; **Waste, continuing the commitment to enhance production waste, limiting the production of waste and maximising recycling and reuse for an increasingly circular economy.**

With this in mind, Barilla has strengthened environmental governance through the adoption of strict policies, certifications in line with international ISO standards and an advanced resource management system, ensuring compliance with regulations and continuous improvement of energy, water and waste management performance.



## DECARBONISATION

Barilla integrates decarbonisation as a central element of its strategy, adopting a science-based approach to reduce emissions across the entire value chain. **The company is committed to aligning its actions with the goals of the Paris Agreement**, helping to limit the global temperature increase to within 1.5°C above pre-industrial levels. To confirm this commitment, **in 2024 the Group renewed its membership of the Science Based Targets (SBTi) initiative, presenting new emission reduction targets for 2030.**

The decarbonisation strategy is structured according to two levels: **reduction of direct emissions and mitigation of indirect emissions along the supply chain.** For direct emissions, Barilla accelerates the energy transition through investments in plants, adopting high-efficiency solutions and increasing the self-generation of energy from renewable sources.

The main sources of indirect emissions are agricultural raw materials and packaging. Barilla promotes sustainable agricultural practices in some strategic supply chains, develops packaging solutions based on eco-design and uses materials with reduced environmental impact. It also works with suppliers along the value chain to reduce emissions and foster a more responsible production model.